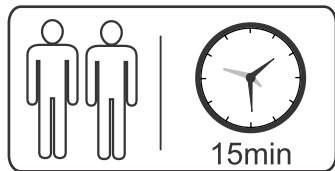
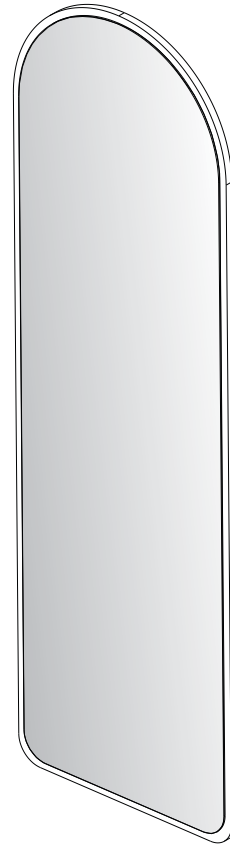


# Esquema de Montagem

## Espelho de Parede Moana Oval 1,60



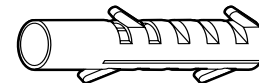
### Ferragens

**A**



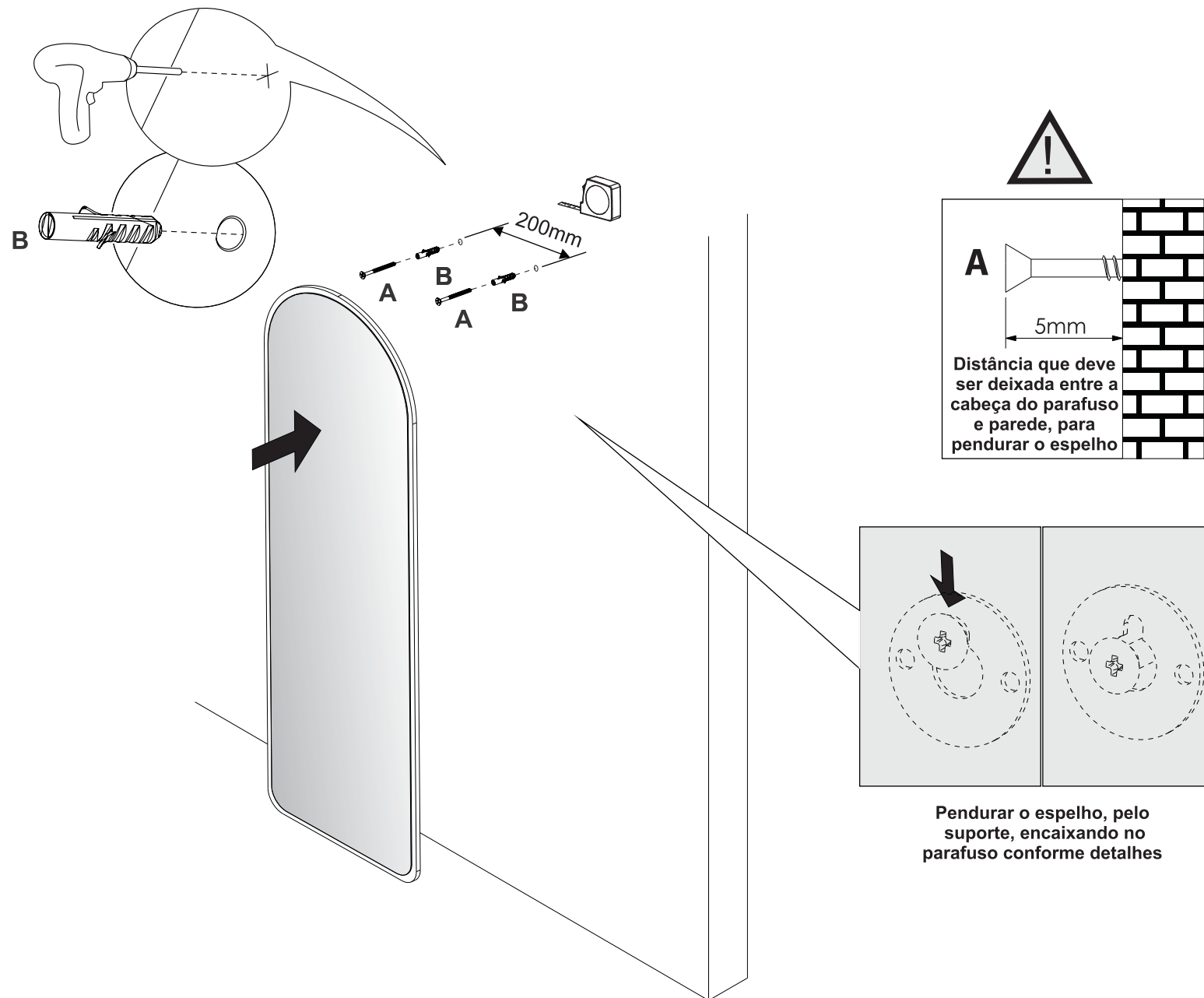
5 x 65    **02**

**B**



Bucha Ø8    **02**

01



**A**  
5mm  
Distância que deve ser deixada entre a cabeça do parafuso e parede, para pendurar o espelho

Pendurar o espelho, pelo suporte, encaixando no parafuso conforme detalhes